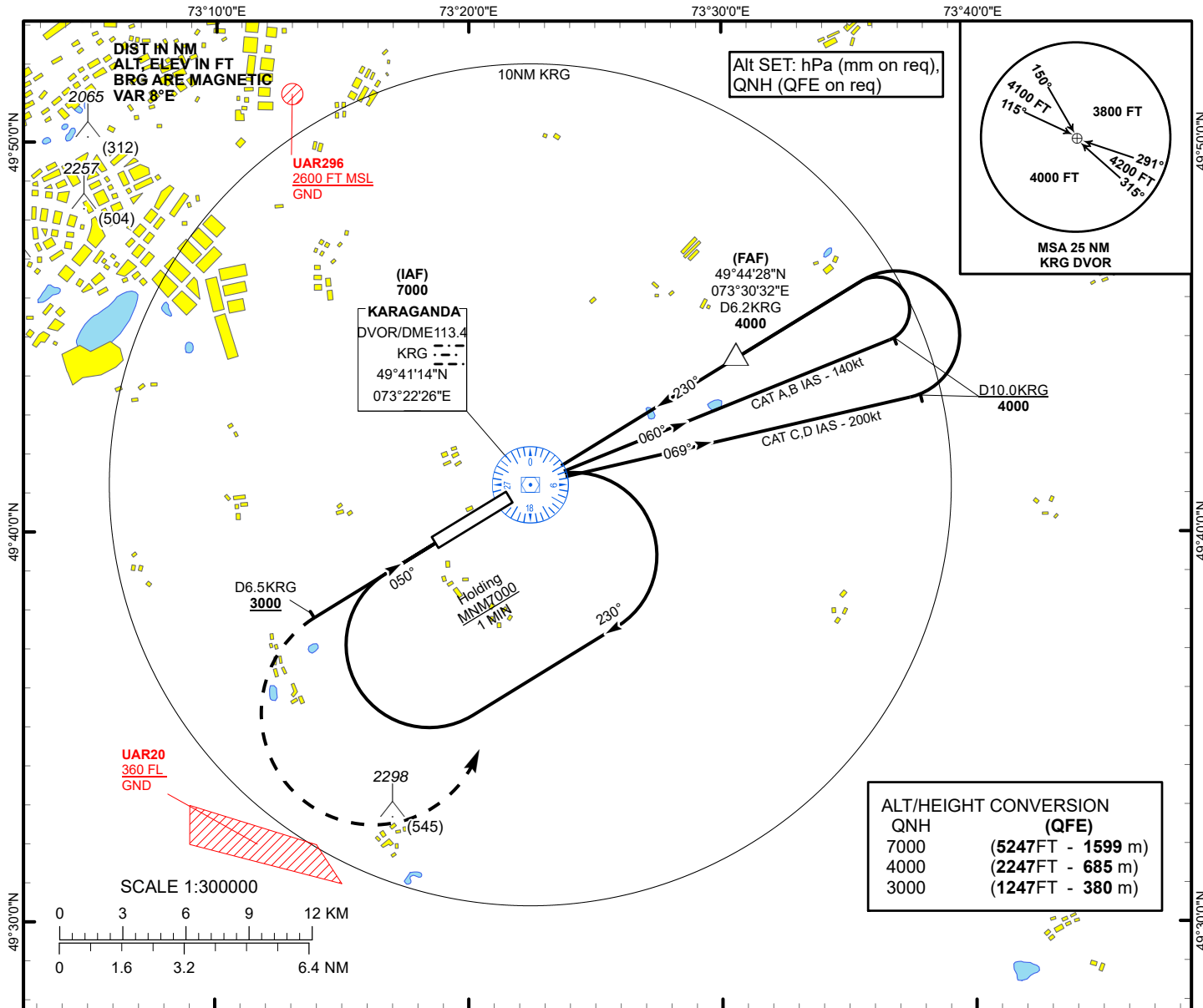


**INSTRUMENT APPROACH
CHART
ICAO**

AERODROME ELEV **1766 FT**
HEIGHTS RELATED TO
THR RWY 23 - ELEV **1753 FT**

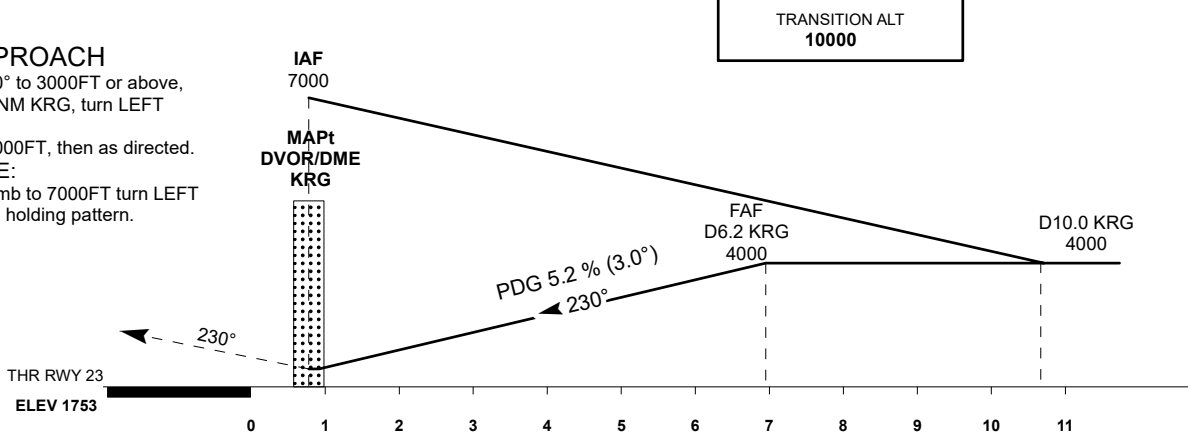
KARAGANDA TOWER 122.0
KARAGANDA ATIS (EN) 135.8
KARAGANDA ATIS (RU) 127.8

KARAGANDA
VOR/DME Z
RWY 23



MISSED APPROACH

Climb on track 230° to 3000FT or above, outbound to D6.5 NM KRG, turn LEFT to KRG.
Climb initially to 4000FT, then as directed.
RADIO FAILURE:
In case of RCF climb to 7000FT turn LEFT to KRG and join to holding pattern.



CHANGE: Missed approach description.

Aircraft Category	A	B	C	D	DIST to THR	NM	7	6	5	4	3	2	1
Straight-in Approach OCA/H					DME KRG	NM	6.2	5.2	4.2	3.2	2.2	1.2	0.2
					ALTITUDE	FT	4000	3713	3394	3076	2757	2439	2121
					HEIGHT	FT	(2247)	(1960)	(1641)	(1323)	(1004)	(686)	(368)
Aerodrome Operating Minima MDH ft x RVR (CMV)	VOR/DME				GS	Kt	80	100	120	140	160	180	
					Desc.Rate(5.2%)	ft/min	420	530	630	740	840	950	
					FAF-MAPt(6.2NM)	min:sec	4:39	3:43	3:06	2:39	2:20	2:04	

KARAGANDA
VOR/DME Z

AERONAUTICAL DATA TABULATION

VOR approach to RWY23 from DVOR/DME KRG	
Fix/point	Coordinates
(IAF) DVOR/DME KRG	49°41'13.9"N 073°22'25.7"E
(FAF) D6.2 KRG	49°44'27.6"N 073°30'32.3"E
THR RWY23	49°40'49.44"N 073°21'24.50"E
Final approach descent angle is 3°	